



Hotwork burners at work at a rotary hearth furnace



Right, left and above: Glass furnace drain and heatup

cations. Proper dryouts result in longer refractory lining life. Uniform heating with Hotwork's services results in uniform expansion in large industrial furnace heatups. Hotwork's portable combustion systems also allow furnace repairs on a localized process area while maintaining operating temperatures in the balance of the process.

In addition to dryout, heatup and hold hot activities Hotwork offers many specialized services to furnace operators, i.e. draining of glass, sulfate burnouts and cullet filling, post weld heat treatment: melt out of frozen materials, and coating cures in furnace stacks or process vessels.

Hotwork has been called in to some unusual situations as well including dryout of fire department training structures, drying rocket launch pad blast deflectors, offering freeze protection, providing melt outs of solidified materials, facilitating research programs and environmental testing.

Manufacturers and installers

of new refractory materials frequently rely on Hotwork to begin the material's asset life under optimum conditions. And furnace designers often rely on Hotwork's experience and process knowhow to assist in commissioning for new or repaired facilities.

**If you need portable heat Hotwork has it.**

In addition to the expertise of our highly trained technicians, our equipment makes it all possible. With 400 sets of portable combustion equipment capable of multiple fuels and capacities on standby and ready to go anywhere in the world, you can be sure the most difficult application can be handled efficiently, effectively and safely.

**Hotwork's Exceptional Services & Equipment**

Hotwork offers an extensive number of services for an impressive number of industries while incorporating the most advanced technologies for furnace and refractory work.

In the area of refractory dryout, Hotwork has no peer. Our proprietary burner is specially designed for refractory drying and helps to insure temperature ramps consistent with a refractory manufacturer's speci-

Hotwork's proprietary burner system



# Refractory Heatup & Dryout Services to the World



**Hotwork-USA**  
 223 Gold Rush Road  
 Lexington, KY 40503-2904 USA  
**www.hotwork.com**  
 email: Hotwork@hotwork.com  
 Ph: 1.859.276.1570  
 Fax: 1.859.276.1583

## The Hotwork Way

Established in 1965, Hotwork-USA has become the leading provider of refractory dryout services for all refractory consuming industries. Operating initially as a licensee of the original Hotwork company founded by Trevor Ward in Dewsbury, West Yorkshire, UK, Hotwork has consistently built upon Mr. Ward's patented gas burners and intellectual property for furnace heatups and refractory dryouts.

Sulfate burnout process at a glass furnace regenerator



Oil refinery



Hotwork's headquarters in Lexington, KY and our management team

Hotwork is regularly improving technology employed and expanding services offered.

Hotwork has served clients operating industrial furnaces with more than 20,000 projects worldwide making it the largest and most experienced company in the field. We maintain 400 sets of portable equipment to address the most complex heatup and dryout projects and our highly specialized technicians are available to get the job done safely and correctly.



Hotwork digital data trend analysis

Over the past 45 years Hotwork has expanded considerably from its original North and South America license region. Hotwork now operates anywhere in the world



Heat recovery coke battery start up

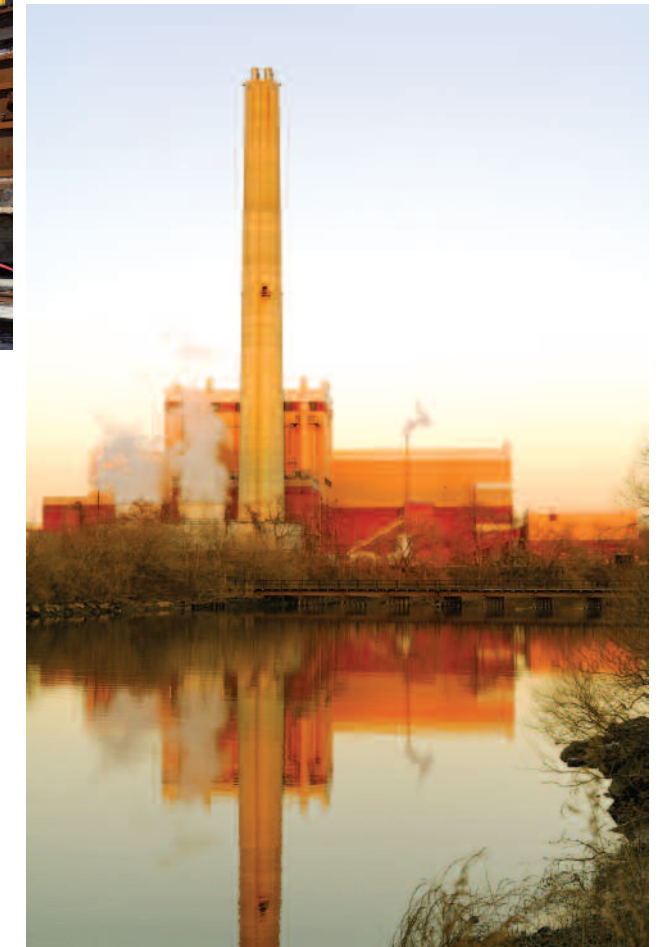
and has subsidiaries in both Canada and Australia. Today you will recognize Hotwork-USA by the trademark, Hotwork®, the web address [www.hotwork.com](http://www.hotwork.com) and by our Lexington, KY USA headquarters.

### The Value of Hotwork's Expertise

Premature refractory failure in the dryout process caused by inadequate temperature control, localized overheating and poor drying action is costly. Time added to a startup schedule in furnace heating is also costly. Shortening a

client's downtime and avoiding potential refractory failure as a result of heatups and dryouts is Hotwork's mission. It's our business.

Hotwork has acquired and maintains exceptional knowledge of our client's processes, an invaluable asset that regularly proves to be essential to minimizing downtime, improving service and extending furnace life and performance. Our technicians and Industry Managers are specialists in planning dryout projects, operating



Waste Incineration Plant

burners, and refractory heating and drying. Some members of our team have planned and executed projects for 30 years or more and our technicians perform as many as 30 projects a year. Hotwork also maintains its edge by continuing to innovate with improvements to our procedures, equipment, and safety preparedness. Extensive new-hire training and annual refresher courses in processes as well as safety are an all-important part of Hotwork's corporate culture.

Cement plant



## Industries Served

Be sure to visit our web site at [www.Hotwork.com](http://www.Hotwork.com) for details about each.

<b>Alumina and Aluminum</b>	<b>Foundry</b>	<b>Petrochemical</b>
<b>Biofuel Units</b>	<b>Glass</b>	<b>Post Weld Heat Treating</b>
<b>Boilers</b>	<b>Hydrocarbon Processing</b>	<b>Power Generation</b>
<b>Cement</b>	<b>Iron</b>	<b>Steel</b>
<b>Chemical Processing</b>	<b>Lead</b>	<b>Titanium</b>
<b>Coating Cures</b>	<b>Metallurgical Coke</b>	<b>Waste Recycle/Incineration</b>
<b>Coke Calcining</b>	<b>Minerals Processing</b>	<b>Zinc Galvanizing</b>
<b>Copper</b>	<b>Nickel</b>	